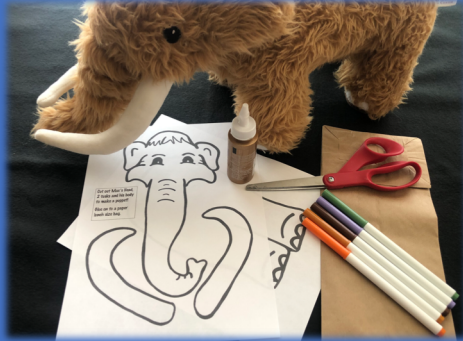
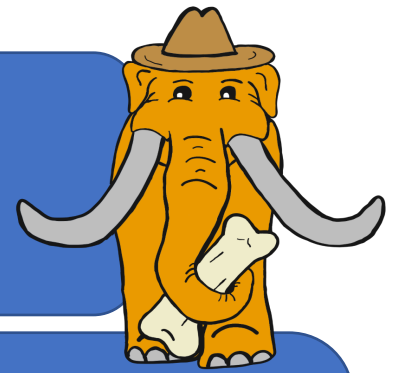


# Science Saturday @ HOME

## Max Mastodon Puppet



### Gathering Supplies:

Max Puppet Printables (2 pages single-sided)

Paper Bag (Lunch size)

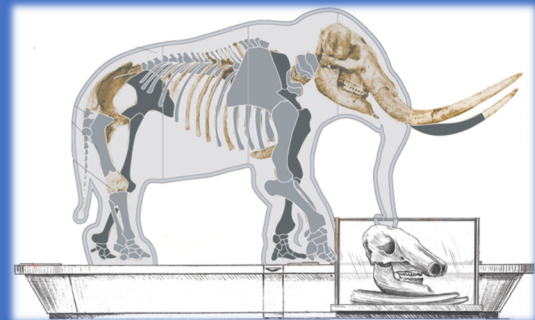
Scissors

Glue

Markers or Colored Pencils

## Meet Max the Mastodon!

Max was found during the building of Diamond Valley Lake in 1995. He is the largest mastodon found in California, standing at over 10 feet at the shoulder and weighing about 6 tons!



Mastodons are extinct proboscideans, and a distant relative to elephants. Mastodons lived in herds browsing and grazing on trees and plants. They are shorter and stockier than the Columbian Mammoths that lived in the valley and had thick fur.

There has been a lot of research done on Max. We know that he was about 40 years old when he died and had a injury to his jaw when he was younger. The injury was probably from fighting with another mastodon. One of the biggest discoveries with Max was in 2018-2019. When comparing his teeth to the teeth of American Mastodons in other parts of the US, his teeth looked much narrower. In fact all of the mastodon teeth from California looked different from mastodons found on the east coast. Then researchers found other skeletal differences too. In 2019 it was announced that Max was the first of a new species of mastodon, a Pacific Mastodon and not an American Mastodon! Max the Pacific Mastodon!

## Try This! Make Your Own Max the Pacific Mastodon.

1. Print the Max Mastodon Puppet Printables. There should be his head, two tusks, and his body on 2 pages.
2. Color the different parts of Max and cut them out.
3. Lay a regular size paper lunch bag with the bottom flap facing up. Lift the bottom flat up and glue Max's body onto the bag.
4. Next glue Max's head on to the bottom flap of the bag. Make sure you only put glue on his head and NOT his trunk!
5. Then put glue only on a little bit of the wider end of the tusks and slide that end under Max's head to glue the tusks in place.

Now you have your own Max the Pacific Mastodon Puppet!

