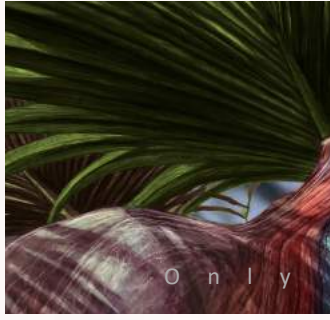
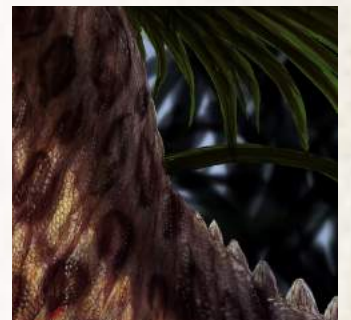


Finding a fossil is like putting a puzzle together.
Can you see who the missing fossil belongs to?
Be careful, sometimes you'll find more than you're
expecting!



Fossils of the Menefee Formation - Prehistoric Pathways

Location information:

This geologic formation is named after Menefee Mountain located in southwest Colorado and whose peak stands over 8,800 feet above sea level.



Geologic maps of the area label the Menefee Formation as **Kmf**. Today that region is a high desert, but 80 to 78 million years ago it was a swampy forest where dinosaurs roamed!



These special maps use different colors to show the locations of different geologic rock layers.

-Geologic layers or stratigraphy can help us tell how old a fossil is by what layer it was found in.



Most recent layers are at the top and go back in time the farther down you go.

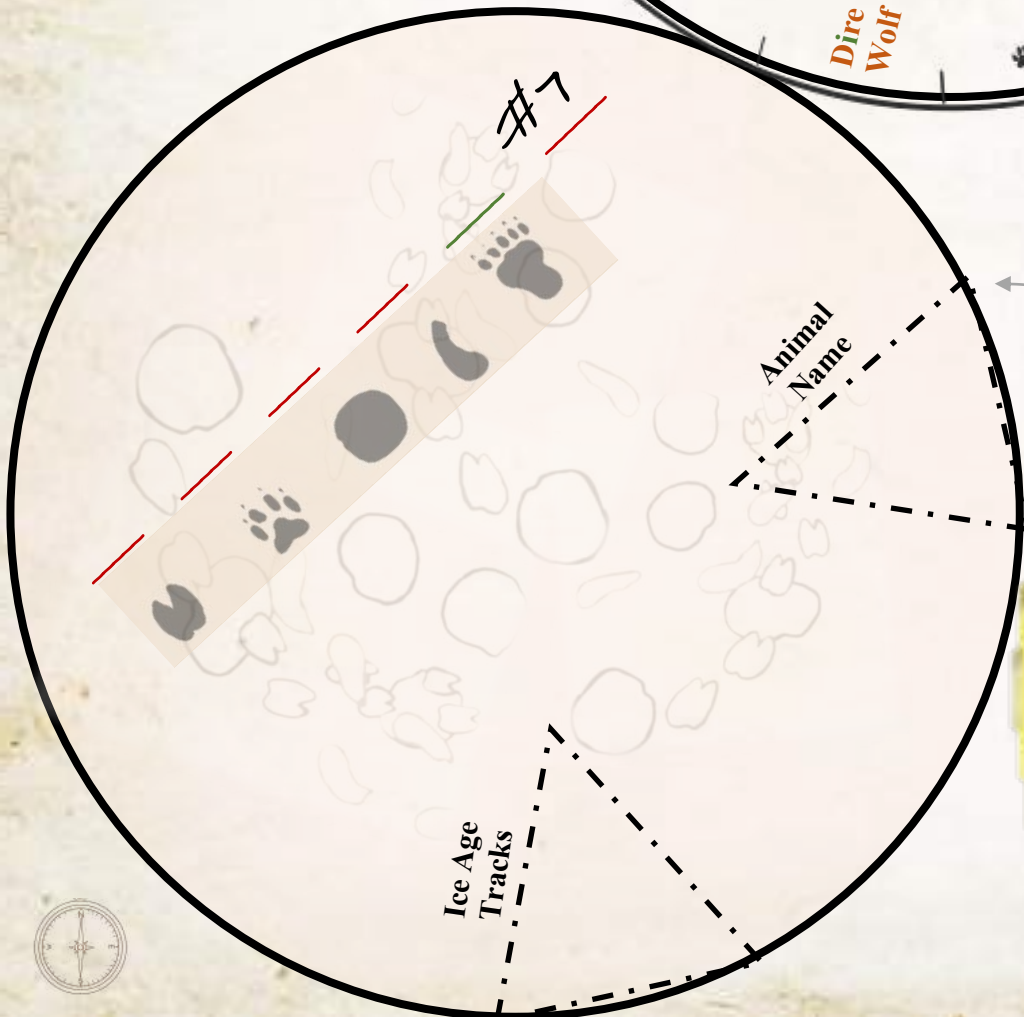
Fxgxyxx Cipher

Ghm yhngw bg

tg xqabubm hk etu.

Will the Ice Age Tracks lead you to your missing fossils?

If an animal walks through some wet mud and their tracks are covered up and preserved they become an example of imprint fossils!



Cut the 2 triangle shapes out of the circle.

Looks kind of like a type of Caesar Cipher!

Cut the two circles out and lay the solid one on top of the circle with the tracks.

See the Curator's file for more information on ciphers.



Kyrgyzstan Rug Puzzle



А Ы К > . Н < Л < Л



Besides beautiful handmade rugs, Kyrgyzstan is also known for having more earthquakes than anywhere else in the world!

It is also the home of fossils belonging to extinct ancestors of the rhinoceros and giraffe.

Excavating a Site

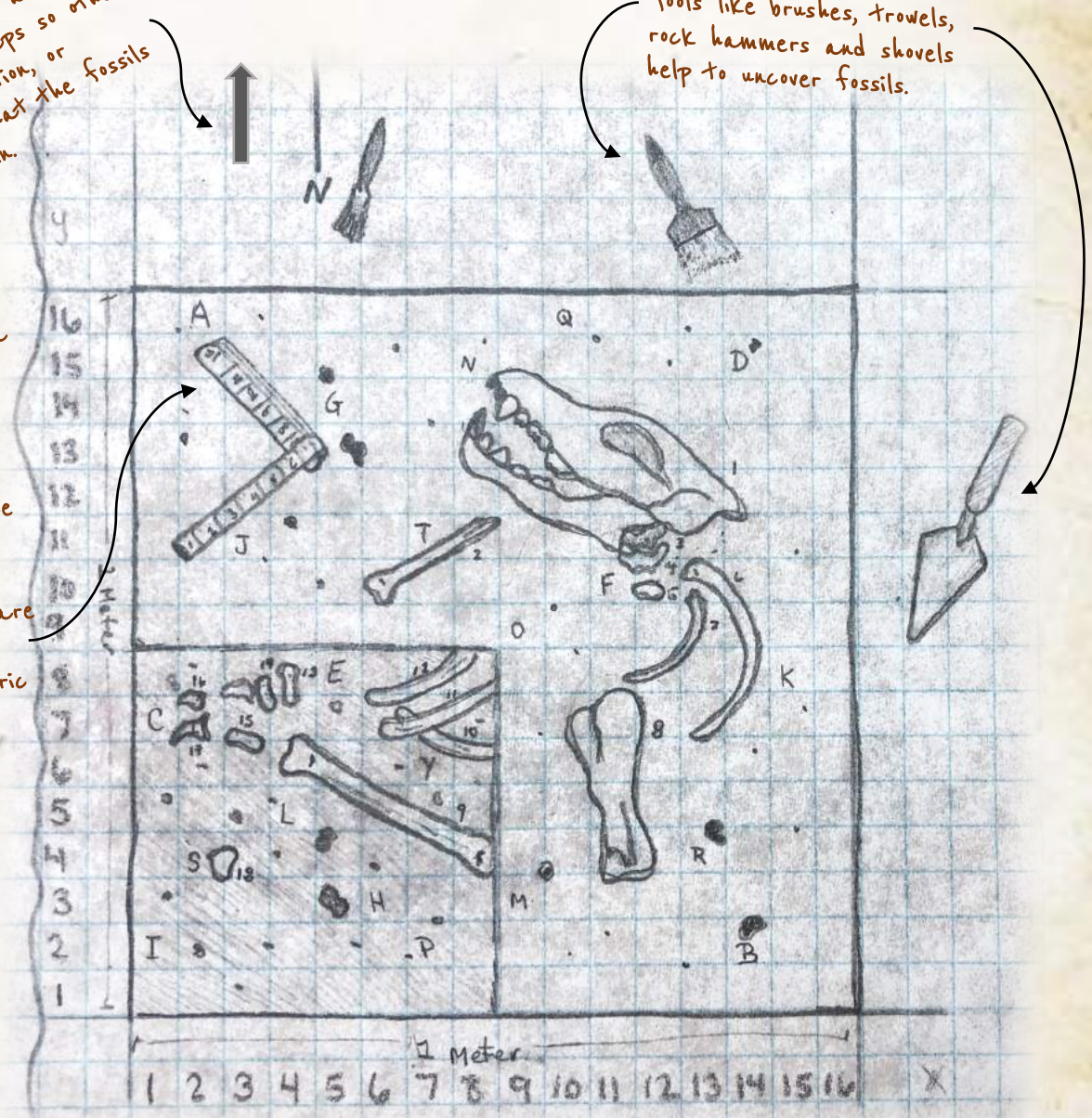
Paleontologists and Archaeologists both work at sites to uncover clues about the past. They also use many of the same tools to excavate and carefully record a site. To record important data, they will make field maps like this map of a Dire Wolf site. What clues can you map out from this paleo site?

North arrows are always important on maps so others know the direction, or orientation, that the fossils were found in.

Tools like brushes, trowels, rock hammers and shovels help to uncover fossils.

Important data and fossil locations are measured, mapped and recorded at the site.

Measurements are always taken using the metric system.



(14,2)

(2,16)

(7,6)

(12,11)



Studying the Trees

For every year that a tree is alive, it grows a new ring. The ring may be wide if it was a wet year or narrow if it was a dry year. This gives clues to temperature and weather patterns in the past. What clue will this tree ring give you?

Dendrochronology:
The scientific study of tree rings.

Dendrochronology records now includes over 13,000 years of history, using 1,000 of sites from around the world.

University of Arizona
Laboratory of
Tree-Ring Research

1:08

7:45

8:05

10:15

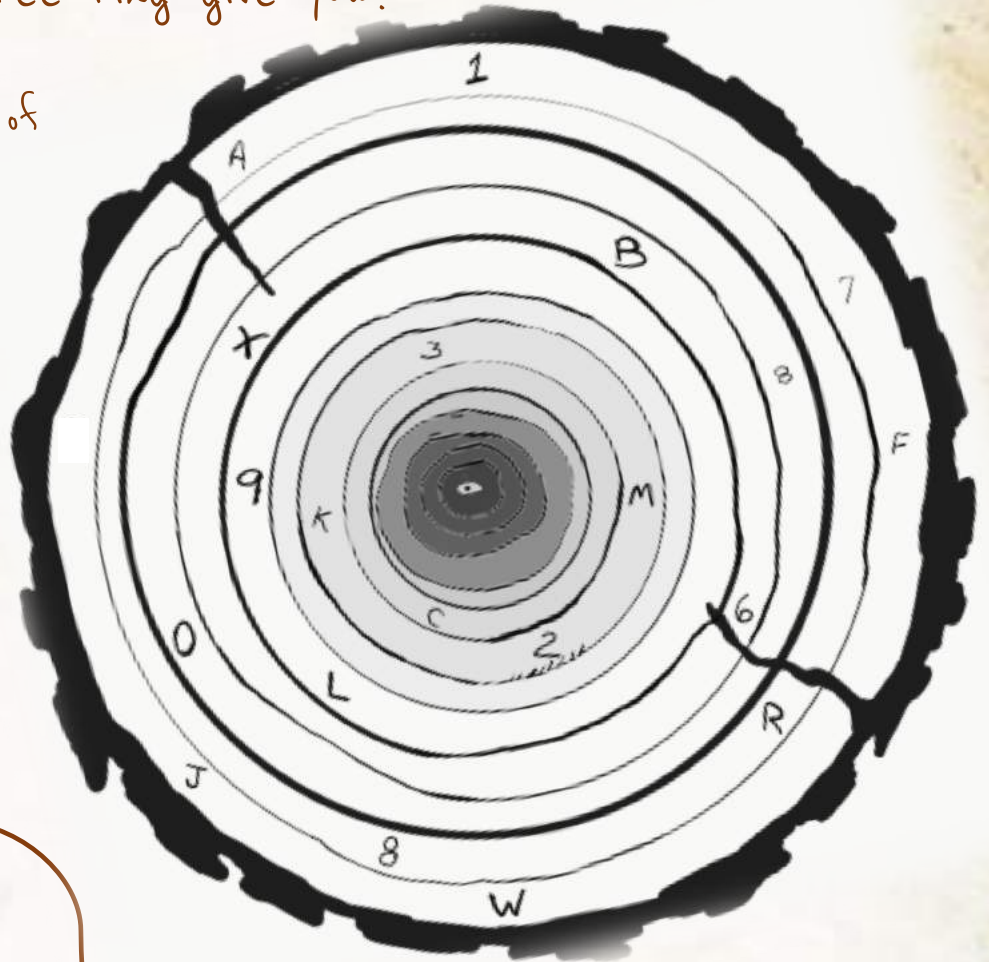
11:45

12:00

2:25

5:05

9:00



World's Oldest
Dendrochronology Lab!

-- Dendrochronology
doesn't work in
tropical areas with
low variation in
growth patterns.

Tree Ring Dating
is used by scientists to tell
how old a tree was when it
was cut down. It can be
used to help date
archaeological sites by
comparing different
samples of tree rings to
each other in a tree ring
lab.

